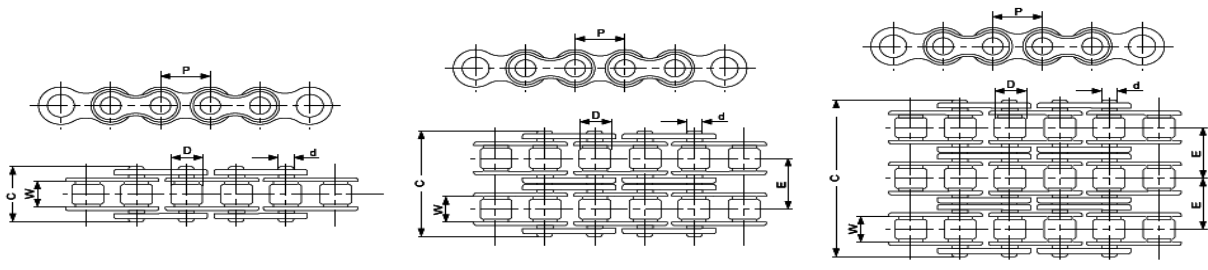
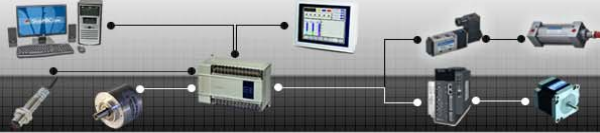


LANT SIMPLEX

ISO	ANSI	P	P2	D	W	d3	C	h2
		in.	mm	mm	mm	mm	mm	mm
04B-1			6	4	2.8	1.85	6.8	5
04C-1	25	1/4"	6.35	3.3	3.18	2.31	7.9	6
05B-1			8	5	3	2.31	8.2	7.1
06B-1		3/8"	9.525	6.35	5.72	3.28	13.15	8.2
06C-1	35	3/8"	9.525	5.08	4.77	3.58	12.4	9
081		1/2"x1/8"	12.7	7.75	3.3	3.66	9.8	9.4
083		1/2"x3/16"	12.7	7.75	4.88	4.09	12.6	10.2
084		1/2"x3/16"R	12.7	7.75	4.88	4.09	14.7	10.2
085	41	1/2"x1/4"	12.7	7.77	6.25	3.58	13.75	9.91
08A-1	40	1/2"	12.7	7.95	7.85	3.96	16.6	12
08B-1		1/2"	12.7	8.51	7.75	4.45	16.7	11.8
10A-1	50	5/8"	15.875	10.16	9.4	5.08	20.7	15.09
10B-1		5/8"	15.875	10.16	9.65	5.08	19.5	14.7
12A-1	60	3/4"	19.05	11.91	12.57	5.94	25.9	18
12B-1		3/4"	19.05	12.07	11.68	5.72	22.5	16
16A-1	80	1"	25.4	15.88	15.75	7.92	32.7	24
16B-1		1"	25.4	15.88	17.02	8.28	36.1	21
20A-1	100	1" 1/4	31.75	19.05	18.9	9.53	40.4	30
20B-1		1" 1/4	31.75	19.05	19.56	10.19	41.3	26.4
24A-1	120	1" 1/2	38.1	22.23	25.22	11.1	50.3	35.7
24B-1		1" 1/2	38.1	25.4	25.4	14.63	53.4	33.2
28A-1	140	1" 3/4	44.45	25.4	25.22	12.7	54.4	41
28B-1		1" 3/4	44.45	27.94	30.99	15.9	65.1	36.7
32A-1	160	2"	50.8	28.58	31.55	14.27	64.8	47.8
32B-1		2"	50.8	29.21	30.99	17.81	66	42



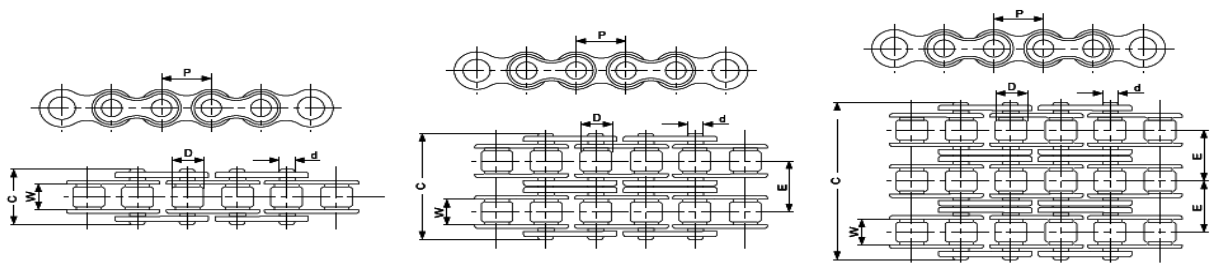


LANT DUPLEX

ISO	ANSI	P	P2	D	W	d3	C	E
		in.	mm	mm	mm	mm	mm	mm
05B-2			8	5	3	2.31	13.9	5.64
06B-2		3/8"	9.525	6.35	5.72	3.28	23.4	10.24
08A-2	40-2	1/2"	12.7	7.95	7.85	3.96	31	14.38
08B-2		1/2"	12.7	8.51	7.75	4.45	31.2	13.92
10A-2	50-2	5/8"	15.875	10.16	9.4	5.08	38.9	18.11
10B-2		5/8"	15.875	10.16	9.65	5.08	36.1	16.59
12A-2	60-2	3/4"	19.05	11.91	12.57	5.94	48.8	22.78
12B-2		3/4"	19.05	12.07	11.68	5.72	42	19.46
16A-2	80-2	1"	25.4	15.88	15.75	7.92	62.7	29.29
16B-2		1"	25.4	15.88	17.02	8.28	68	31.88
20A-2	100-2	1" 1/4	31.75	19.05	18.9	9.53	76.4	35.76
20B-2		1" 1/4	31.75	19.05	19.56	10.19	77.8	36.45
24A-2	120-2	1" 1/2	38.1	22.23	25.22	11.1	95.8	45.44
24B-2		1" 1/2	38.1	25.4	25.4	14.63	101.7	48.36
28A-2	140-2	1" 3/4	44.45	25.4	25.22	12.7	103.3	48.87
28B-2		1" 3/4	44.45	27.94	30.99	15.9	124.6	59.56
32A-2	160-2	2"	50.8	28.58	31.55	14.27	123.3	58.55
32B-2		2"	50.8	29.21	30.99	17.81	124.6	58.55

LANT TRIPLEX

ISO	ANSI	P	P2	D	W	d3	C	E
		in.	mm	mm	mm	mm	mm	mm
06B-3		3/8"	9.525	6.35	5.72	3.28	33.5	10.24
08A-3	40-3	1/2"	12.7	7.95	7.85	3.96	45.4	14.38
08B-3		1/2"	12.7	8.51	7.75	4.45	45.1	13.92
10A-3	50-3	5/8"	15.875	10.16	9.4	5.08	57	18.11
10B-3		5/8"	15.875	10.16	9.65	5.08	52.7	16.59
12A-3	60-3	3/4"	19.05	11.91	12.57	5.94	71.5	22.78
12B-3		3/4"	19.05	12.07	11.68	5.72	61.5	19.46
16A-3	80-3	1"	25.4	15.88	15.75	7.92	91.7	29.29
16B-3		1"	25.4	15.88	17.02	8.28	99.8	31.88
20A-3	100-3	1" 1/4	31.75	19.05	18.9	9.53	112.2	35.76
20B-3		1" 1/4	31.75	19.05	19.56	10.19	114.2	36.45
24A-3	120-3	1" 1/2	38.1	22.23	25.22	11.1	141.4	45.44
24B-3		1" 1/2	38.1	25.4	25.4	14.63	150.1	48.36
28A-3	140-3	1" 3/4	44.45	25.4	25.22	12.7	152.2	48.87
28B-3		1" 3/4	44.45	27.94	30.99	15.9	184.2	59.56
32A-3	160-3	2"	50.8	28.58	31.55	14.27	181.8	58.55
32B-3		2"	50.8	29.21	30.99	17.81	183.2	58.55



LANT DOUBLE PITCH

ISO	ANSI	P	P2	d1	b1	d2	L	h2
		in.	mm	mm	mm	mm	mm	mm
208A-1	2040	1"	25.4	7.95	7.85	3.96	16.6	12
208B-1		1"	25.4	8.51	7.75	4.45	16.7	11.8
210A-1	2050	1" 1/4	31.75	10.16	9.4	5.08	20.7	15
210B-1		1" 1/4	31.75	10.16	9.65	5.08	19.5	14.7
212A-1	2060	1" 1/2	38.1	11.91	12.57	5.94	25.9	18
212B-1		1" 1/2	38.1	12.07	11.68	5.72	22.5	16

